

# 16-CHANNEL MULTI-FUNCTION GPIO CONTROLLER WITH I<sup>2</sup>C INTERFACE

## FEATURES

- 16-bit general-purpose I/O expander
- 16 multi-function I/O, each can be configured as GPIO input or output mode independently
- Dual power supply, supporting converting between  $V_{DD(P)}$  and  $V_{DD(I2C-BUS)}$
- Selectable push-pull or open-drain output
- Interrupt latch function
- Four programmable output drive strengths
- Open-drain active LOW interrupt output(INTN)
- 1MHz I<sup>2</sup>C interface, 2 selectable addresses
- SCL/SDA inputs supports 1.8V logic input
- Power supply: 1.65V~5.5V
- Low standby current(<0.1uA)
- BGA 3.0mmX3.0mmX0.86mm-24B package

## APPLICATIONS

Cell Phone

Keyboard

PDA/MP3/MP4/CD/Mini display

Smart home appliance

## GENERAL DESCRIPTION

AW95016A is a 16 channel general purpose I/O (GPIO) expander controller. Each channel can be configured as GPIO input or output separately.

There are two supply voltages for AW95016A:

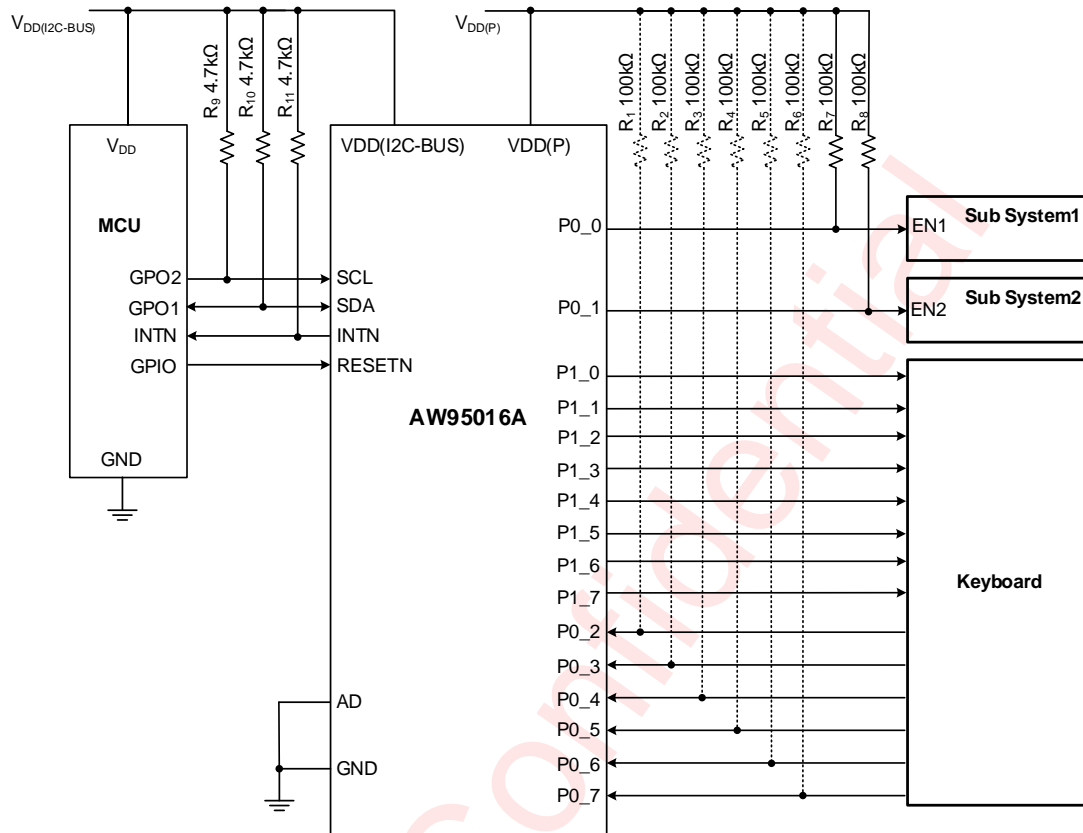
$V_{DD(P)}$  and  $V_{DD(I2C-BUS)}$ .  $V_{DD(I2C-BUS)}$  provides the supply voltage for the interface at the master side and the  $V_{DD(P)}$  provides the supply for internal circuits and GPIOs.  $V_{DD(I2C-BUS)}$  should be connected to the power of the external SCL/SDA lines. The voltage level on Port Px\_x of the AW95016A is determined by the  $V_{DD(P)}$ .

After power-on, all channels are configured as input by default. However, the system master can enable channels as either input or output by writing to configuration bits.

In GPIO input mode, when interrupt mask is closed, open-drain interrupt (INTN) is active when any input state differs from its corresponding input port register state and can be used to indicate to the system master that an input state has changed. After reading GPIO state through I<sup>2</sup>C interface, the interrupt is cleared. In output mode, each channel can be configured as push-pull or open-drain output independently.

AW95016A is available in BGA 3.0mmX3.0mmX0.86mm-24B package. It operates from 1.65V to 5.5V over the temperature range of -40°C to +85°C.

## TYPICAL APPLICATION CIRCUIT



In this application schematic, P0\_0, P0\_1 are configured as GPIO open-drain output to control the sub system, and external resistors R<sub>7</sub>, R<sub>8</sub> are needed, P1\_0-P1\_7 are configured as GPIO push-pull output, P0\_2-P0\_7 are configured as GPIO input, and external resistors R<sub>1</sub>-R<sub>6</sub> are needed when external driver is open-drain output or the input ports are floating.

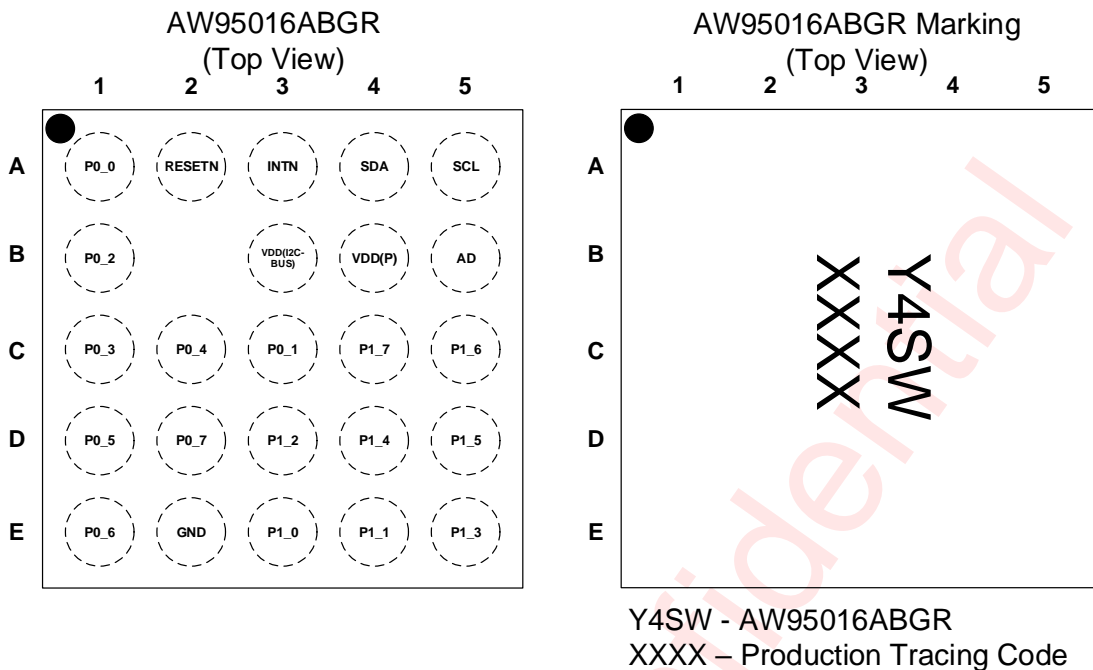
If an output in P<sub>x</sub>\_x port is configured as a push-pull output, there is no need for external pull-up resistors.

If an output in P<sub>x</sub>\_x port is configured as an open-drain output, external pull-up resistors are required.

If an input in P<sub>x</sub>\_x port is floating, external pull-up resistor may be needed, unless internal pull-up/pull-down resistor is configured.

## AW95016A application circuit

## PIN CONFIGURATION AND TOP MARK

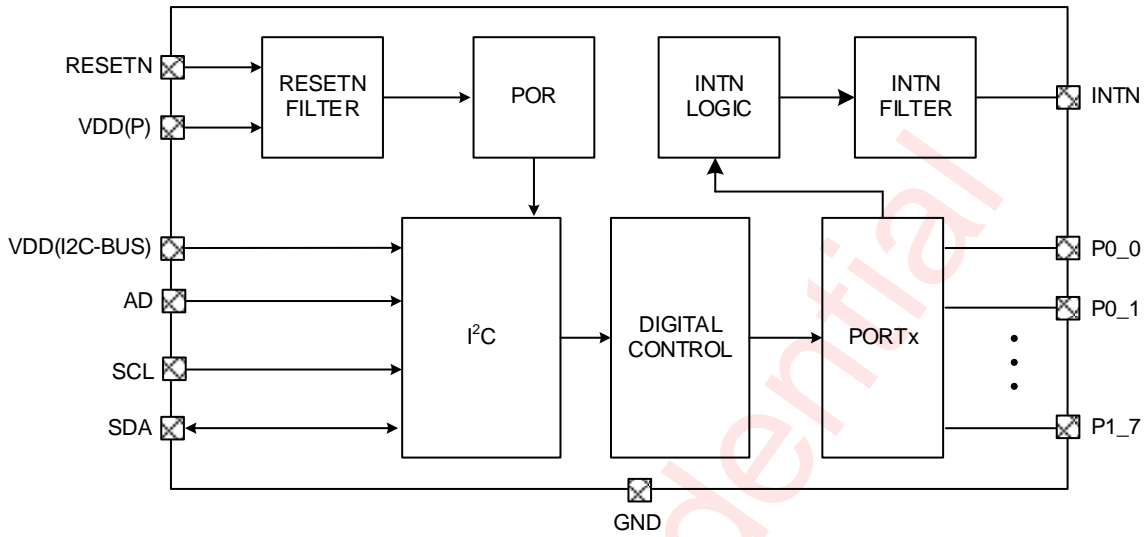


## PIN DEFINITION

No.	NAME	DESCRIPTION
A1	P0_0	Input/output port, GPIO input mode default. Can be configured as output mode.
A2	RESETN	Active low hardware reset pin.
A3	INTN	Open-drain active low interrupt output pin, external pull-up resistor is needed.
A4	SDA	Serial data I/O for I <sup>2</sup> C interface.
A5	SCL	Serial clock input for I <sup>2</sup> C interface.
B1	P0_2	Input/output port, GPIO input mode default. Can be configured as output mode.
B3	VDD(I2C-BUS)	Power supply for I <sup>2</sup> C interface: 1.65V~5.5V.
B4	VDD(P)	Power supply for internal circuit and GPIO interface: 1.65V~5.5V.
B5	AD	I <sup>2</sup> C interface device address, connects to GND, VDD(P) for different device address of I <sup>2</sup> C.
C1	P0_3	Input/output port, GPIO input mode default. Can be configured as output mode.
C2	P0_4	Input/output port, GPIO input mode default. Can be configured as output mode.
C3	P0_1	Input/output port, GPIO input mode default. Can be configured as output mode.

C4	P1_7	Input/output port, GPIO input mode default. Can be configured as output mode.
C5	P1_6	Input/output port, GPIO input mode default. Can be configured as output mode.
D1	P0_5	Input/output port, GPIO input mode default. Can be configured as output mode.
D2	P0_7	Input/output port, GPIO input mode default. Can be configured as output mode.
D3	P1_2	Input/output port, GPIO input mode default. Can be configured as output mode.
D4	P1_4	Input/output port, GPIO input mode default. Can be configured as output mode.
D5	P1_5	Input/output port, GPIO input mode default. Can be configured as output mode.
E1	P0_6	Input/output port, GPIO input mode default. Can be configured as output mode.
E2	GND	Ground.
E3	P1_0	Input/output port, GPIO input mode default. Can be configured as output mode.
E4	P1_1	Input/output port, GPIO input mode default. Can be configured as output mode.
E5	P1_3	Input/output port, GPIO input mode default. Can be configured as output mode.

FUNCTIONAL BLOCK DIAGRAM



awinic Confidential

**ORDERING INFORMATION**

Part Number	Temperature	Package	Marking	Moisture Sensitivity Level	Environmental Information	Delivery Form
AW95016ABGR	-40°C~85°C	BGA 3mmX3mm-24B	Y4SW	MSL3	ROHS+HF	3000 units/ Tape and Reel

**ABSOLUTE MAXIMUM RATINGS<sup>(NOTE1)</sup>**

PARAMETERS		RANGE
Supply voltage range $V_{DD(P)}, V_{DD(I2C-BUS)}$		-0.3V to 6V
Input voltage range	SCL, SDA, RESETN	-0.3V to $V_{DD(I2C-BUS)}$
Output voltage range	AD, INTN, P0_0~P1_7	-0.3V to $V_{DD(P)}$
Operating free-air temperature range		-40°C to 85°C
Maximum operating junction temperature $T_{JMAX}$		150°C
Storage temperature $T_{STG}$		-65°C to 150°C
Lead temperature (soldering 10 seconds)		260°C
ESD (NOTE 2)		
HBM		±2000V
CDM		±1500V
Latch-Up		
Test condition: JEDEC STANDARD NO.78E NOVEMBER 2016		+IT: 200mA -IT: -200mA

**NOTE1:** Conditions out of those ranges listed in "absolute maximum ratings" may cause permanent damages to the device. In spite of the limits above, functional operation conditions of the device should within the ranges listed in "recommended operating conditions". Exposure to absolute-maximum-rated conditions for prolonged periods may affect device reliability.

**NOTE2:** The human body model is a 100pF capacitor discharged through a 1.5kΩ resistor into each pin. Test method: MIL-STD-883J Method 3015.9 EIA/JESD22-C101F(CDM)

**ELECTRICAL CHARACTERISTICS**

$V_{DD(P)}=1.65V$  to  $5.5V$ ,  $V_{DD(I2C-BUS)}=1.65V$  to  $5.5V$ ,  $T_A=25^\circ C$  for typical values (unless otherwise noted)

Parameter		Test Condition	Min.	Typ.	Max.	Unit
<b>Power supply voltage and current</b>						
$V_{DD(P)}$	Supply voltage		1.65		5.5	V
$V_{DD(I2C-BUS)}$	I <sup>2</sup> C supply voltage		1.65		5.5	V
$V_{POR}$	Power-on reset voltage		0.9	1.2	1.6	V
$I_{SD}$	Shutdown current	$I_{DD(P)}+I_{DD(I2C-BUS)}$ ; RESETN=GND			1	$\mu A$
$I_{STB}$	Stand-by current	$I_{DD(P)}+I_{DD(I2C-BUS)}$ ; RESETN= $V_{DD(I2C-BUS)}$ , SCL, SDA, AD=GND, GPIO ports=GND or $V_{DD(P)}$		0.5	5	$\mu A$
		$I_{DD(P)}+I_{DD(I2C-BUS)}$ ; RESETN= $V_{DD(I2C-BUS)}$ , GPIO ports=GND or $V_{DD(P)}$ , AD, SDA=GND, $f_{SCL}=400kHz$		5	20	$\mu A$
$\Delta I_Q$	Additional quiescent supply current	SCL, SDA, RESETN; one input at $V_{DD(I2C-BUS)}-0.6V$ , other inputs at $V_{DD(I2C-BUS)}$ ; $V_{DD(P)}=1.65V$ to $5.5V$			20	$\mu A$
		P port, AD; One input at $V_{DD(P)}-0.6V$ , Other inputs at $V_{DD(P)}$ ; $V_{DD(P)}=1.65V$ to $5.5V$			75	$\mu A$
<b>Digital pin input</b>						
$V_{IH}$	High-level input voltage	AD, P0_0 to P0_7, P1_0 to P1_7	$0.7 \times V_{DD(P)}$			V
		SCL, SDA, RESETN	$0.7 \times V_{DD(I2C-BUS)}$			
$V_{IL}$	Low-level input voltage	AD, P0_0 to P0_7, P1_0 to P1_7			$0.3 \times V_{DD(P)}$	V
		SCL, SDA, RESETN			$0.3 \times V_{DD(I2C-BUS)}$	

Parameter		Test Condition		Min.	Typ.	Max.	Unit
$I_{IL}$	Input leakage current	P port; $V_I = V_{DD(P)}$ or GND; $V_{DD(P)} = 1.65V$ to $5V$				1	$\mu A$
$R_{PD}$	internal pull-down resistance	RESETN			1		$M\Omega$
<b>Digital pin output</b>							
$V_{OH}^{[1]}$	High-level output voltage	$I_{SOURCE} = 10mA$	$V_{DD(P)} = 1.65V$		$V_{DD(P)} - 225$		mV
			$V_{DD(P)} = 3.3V$		$V_{DD(P)} - 80$		
			$V_{DD(P)} = 5.0V$		$V_{DD(P)} - 70$		
		$I_{SOURCE} = 8mA$	$V_{DD(P)} = 1.65V$		$V_{DD(P)} - 175$		
			$V_{DD(P)} = 3.3V$		$V_{DD(P)} - 75$		
			$V_{DD(P)} = 5.0V$		$V_{DD(P)} - 55$		
$V_{OL}^{[1]}$	Low-level output voltage	$I_{SINK} = 10mA$	$V_{DD(P)} = 1.65V$		120		mV
			$V_{DD(P)} = 3.3V$		50		
			$V_{DD(P)} = 5.0V$		35		
		$I_{SINK} = 8mA$	$V_{DD(P)} = 1.65V$		95		
			$V_{DD(P)} = 3.3V$		40		
			$V_{DD(P)} = 5.0V$		30		
$I_{OH}^{[2][3]}$	High-level output current	$V_{OH} = 0.8 V_{DD(P)}$	$V_{DD(P)} = 1.65V$	2.2	3.3		mA
			$V_{DD(P)} = 3.3V$	12	16		
			$V_{DD(P)} = 5.0V$	25	33		
		$V_{OH} = 0.9 V_{DD(P)}$	$V_{DD(P)} = 1.65V$	1.2	2		
			$V_{DD(P)} = 3.3V$	6.5	9		
			$V_{DD(P)} = 5.0V$	14	18		
$I_{OL}^{[2][4]}$	Low-level output current	$V_{OL} = 0.2$	$V_{DD(P)} = 1.65V$	2.5	4		mA
			$V_{DD(P)} = 3.3V$	8	11		
			$V_{DD(P)} = 5.0V$	11	15		
		$V_{OL} = 0.4$	$V_{DD(P)} = 1.65V$	4.5	6		
			$V_{DD(P)} = 3.3V$	14	20		
			$V_{DD(P)} = 5.0V$	21	30		

[1] Register P0DSR/P1DSR = 0xFF

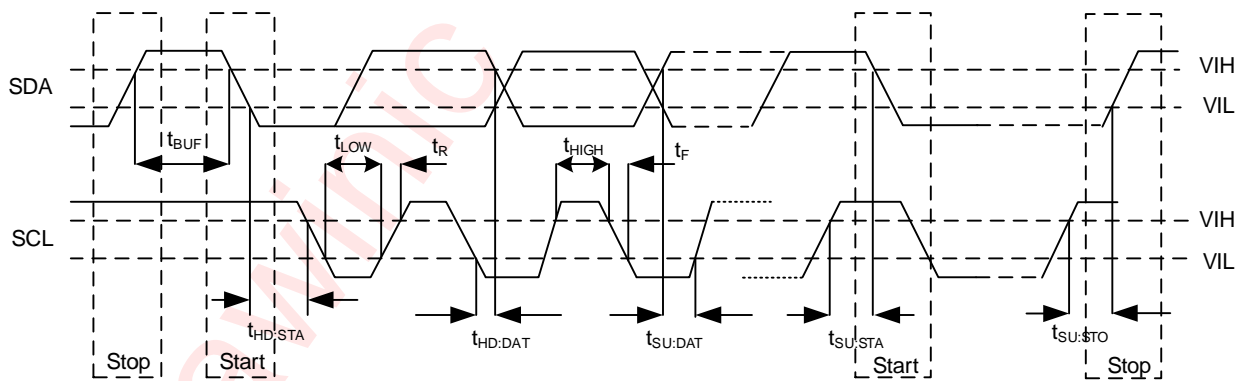
[2] Register P0DSR/P1DSR = 0x00

[3] The total current sourced by all I/Os must be limited to 160mA.

[4] Each I/O must be externally limited to a maximum of 30mA, for a device total of 200mA

## I2C INTERFACE TIMING

PARAMETER		FAST MODE		FAST MODE PLUS		UNIT
		MIN	MAX	MIN	MAX	
$F_{SCL}$	Interface clock frequency	-	400	-	1000	kHz
$T_{HD:STA}$	(Repeat-start) START condition hold time	0.6	-	0.26	-	$\mu$ s
$T_{LOW}$	Low level width of SCL	1.3	-	0.5	-	$\mu$ s
$T_{HIGH}$	High level width of SCL	0.6	-	0.26	-	$\mu$ s
$T_{SU:STA}$	(Repeat-start) START condition setup time	0.6	-	0.26	-	$\mu$ s
$T_{HD:DAT}$	Data hold time	0	-	0	-	$\mu$ s
$T_{SU:DAT}$	Data setup time	0.1	-	0.05	-	$\mu$ s
$T_R$	Rising time of SDA and SCL	-	0.3	-	0.12	$\mu$ s
$T_F$	Falling time of SDA and SCL	-	0.3	-	0.12	$\mu$ s
$T_{SU:STO}$	STOP condition setup time	0.6	-	0.26	-	$\mu$ s
$T_{BUF}$	Time between start and stop condition	1.3	-	0.5	-	$\mu$ s

I<sup>2</sup>C Interface Timing

## DETAILED FUNCTIONAL DESCRIPTION

### OVERVIEW

AW95016A is a 16 channel GPIO controller with I<sup>2</sup>C interface. Each I/O port can be configured as output or input independently. After power-on, all channels are configured as inputs.

When configured as input, the user can turn on the interrupt function. At this time, port state changes are indicated by the INTN. The INTN can be cleared by reading GPIO through I<sup>2</sup>C or enable interrupt mask.

When configured as output, push-pull or open-drain modes can be selected.

### OPERATION MODE AND RESET

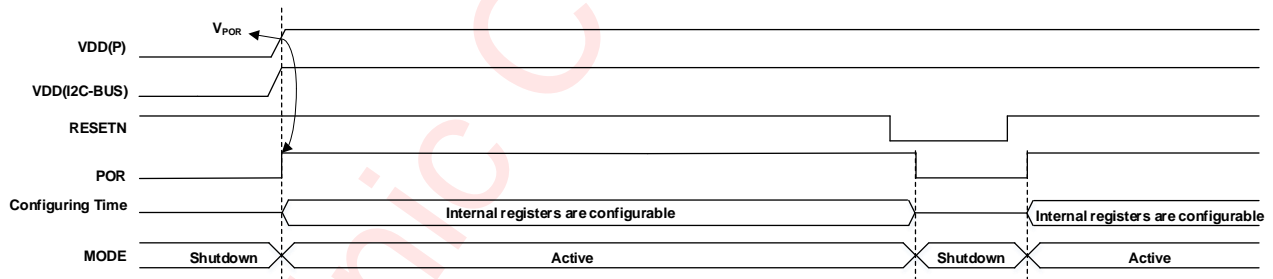
#### RESET

##### Power On Reset

Upon initial power-up, the AW95016A is reset by internal power-on-reset, and all registers are reset to default value, and the chip is shut down.

Once the supply voltage  $V_{DD(P)}$  drops below the threshold voltage  $V_{POR}(1.2V)$ , the power-on-reset will reset the chip again. By reading the bit PUST of the register STATE (address 60h), whether the chip has been reset can be detected.

When the  $V_{DD(P)}$  and  $V_{DD(I2C-BUS)}$  ramps up above the threshold voltage  $V_{POR}(1.2V)$  and RESETN is high, POR is pulled high, meanwhile the chip enters into active mode. Only in active mode, registers could be configured. Once  $V_{DD(P)}$  is below  $V_{POR}$ , POR is triggered and all registers are reset to their default value. The recommended operation timing is shown as below.



Note: The rising curve of VDD(I2C-BUS) in this figure is the latest rising curve, VDD(I2C-BUS) should finish rising before this curve.

#### Power On Timing

#### Software Reset

By writing 00h to register RESET (address 70h), the software reset is triggered. Then all registers will be reset to the default value.

### OPERATING MODE

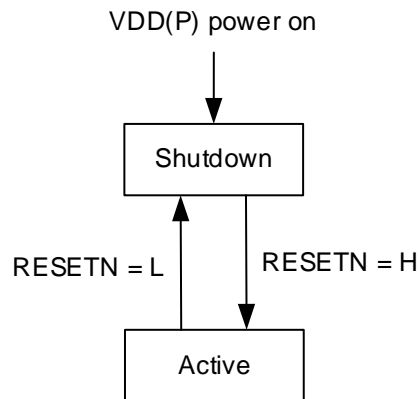
#### Shutdown mode

The AW95016A enters into shutdown mode automatically when RESETN is pulled low. In this mode, I<sup>2</sup>C interface is not accessible, all registers will be reset and can't be configured.

#### Active mode

If pin RESETN is high, the chip enters into active mode. During this period, all registers are configurable with

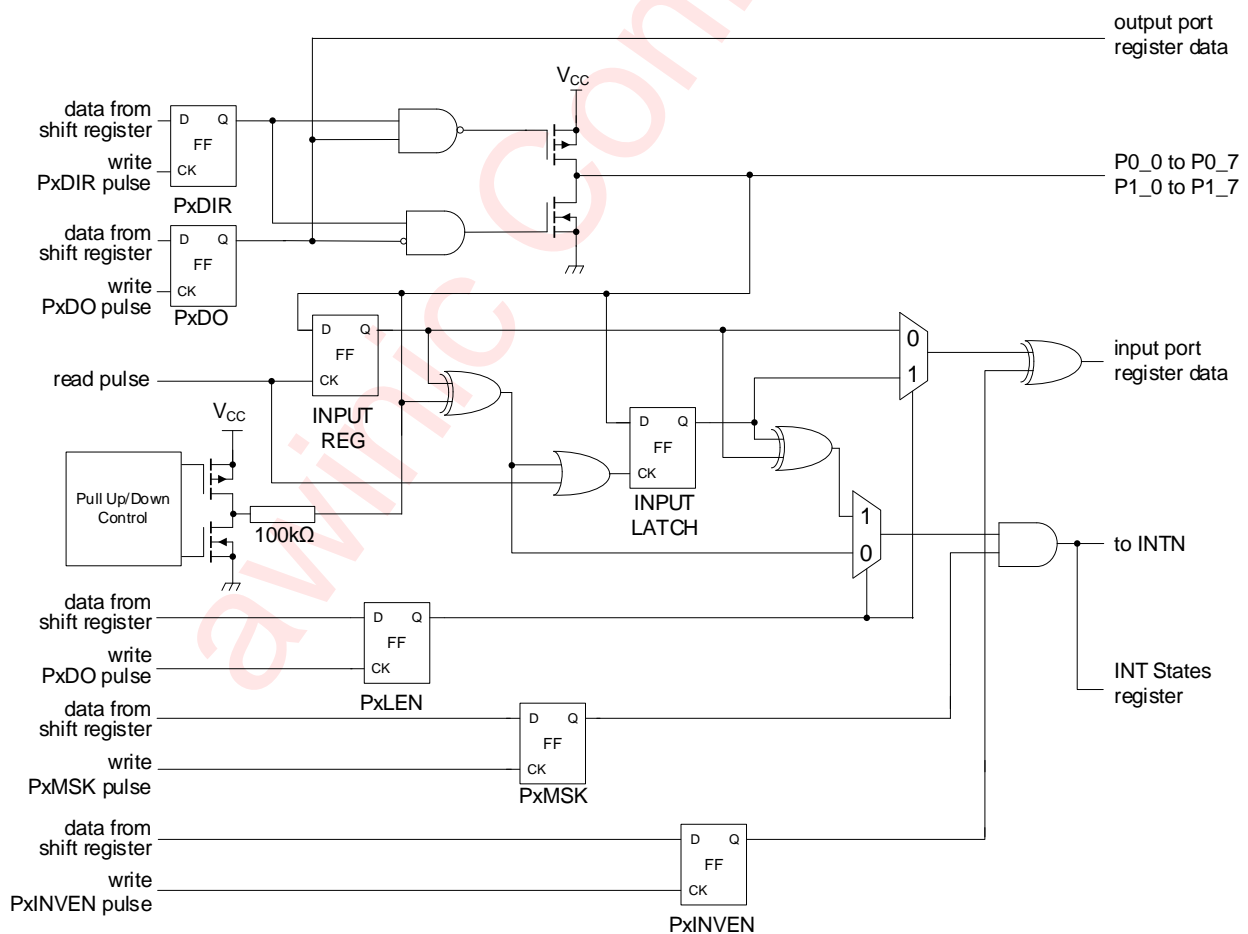
full function.



AW95016A operating mode transition

### FEATURE DESCRIPTION

The following figure is the schematic of GPIO. In this figure 'read pulse' is the response signal generated by I<sup>2</sup>C module during reading data from P0DI/P1DI (address 00h/01h). The letter 'x' in the names of registers in the figure represents '0' or '1'.



Schematic of GPIO

## GPIO OUTPUT

If a bit in registers P0DIR/P1DIR (address 06h/07h) is set to '1', the corresponding port pin is enabled as output. The output data of ports can be configured by P0DO/P1DO (address 02h/03h).

User can choose push-pull or open-drain mode of each port by setting the corresponding bit in P0DOMD/P1DOMD (address 16h/17h) to '0' or '1'. The default value is '0' as push-pull mode.

The output drive strength of GPIO is controlled by registers P0DSR1/P0DSR2/P1DSR1/P1DSR2 (address 08h/09h/0Ah/0Bh). Each port can be configured independently by two bits of those registers. The relationship between two bits and GPIO output drive strength is 00b = 0.25x, 01b = 0.5x, 10b = 0.75x or 11b = 1x.

## GPIO INPUT

If a bit in registers P0DIR/P1DIR (address 06h/07h) is set to '0', the corresponding port pin is enabled as a high-impedance input. Read-only registers P0DI/P1DI (address 00h/01h) reflect the incoming logic levels of the pins and the value can be read by I<sup>2</sup>C interface. If a bit in registers P0INVEN/P1INVEN (address 04h/05h) is set to '1', the corresponding bit read from P0DI/P1DI will be inverted.

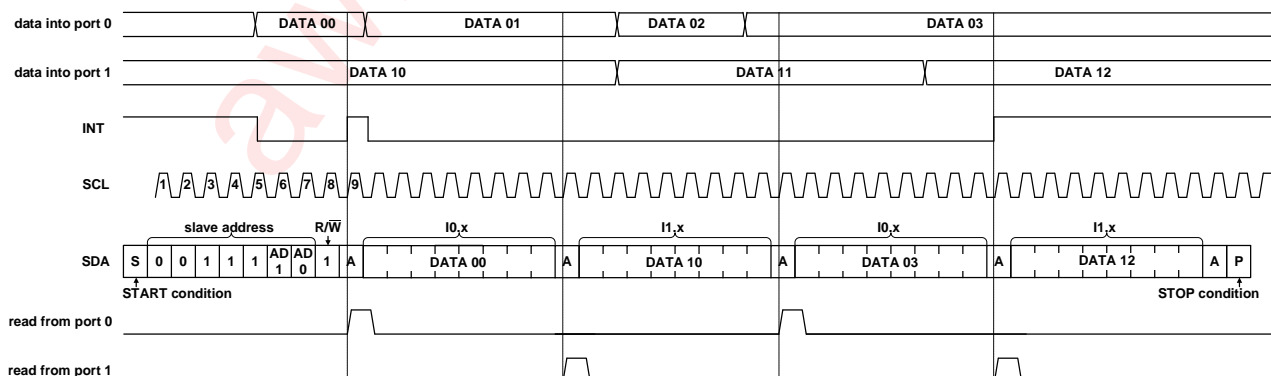
The port level can be configured as '0' or '1' by setting P0PEN/P1PEN (address 0Eh/0Fh) and P0PMD/P1PMD (address 10h/11h) as a fixed port level. User can enable internal pull-up/pull-down resistors for each I/O pins by setting corresponding bit of registers P0PEN/P1PEN (address 0Eh/0Fh) to '1'.

Meanwhile, a 100kΩ resistor of pull-up or pull-down for I/O pins can be configured by setting P0PMD/P1PMD (address 10h/11h) to '0' or '1'.

## INTERRUPT

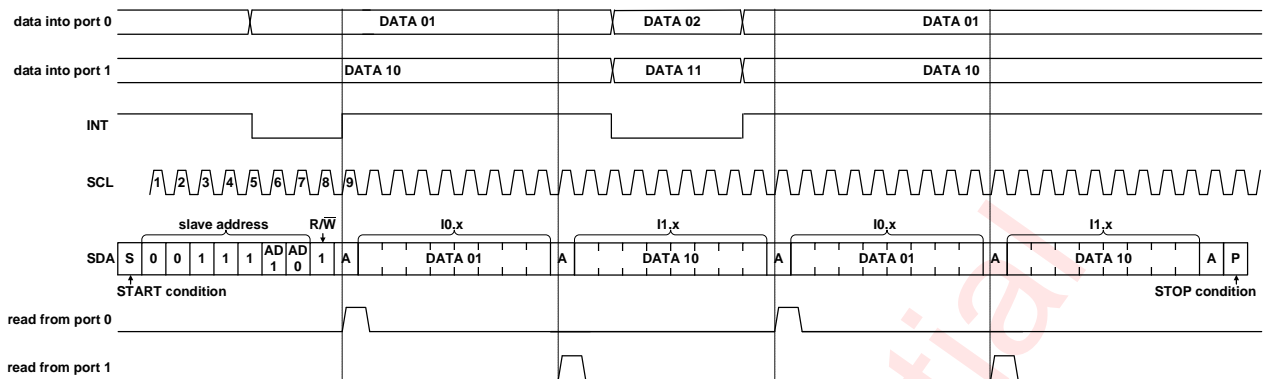
After power on reset, each bit of registers P0MSK/P1MSK (address 12h/13h) is set to '1', which means the interrupt function are disabled. User can set each bit in those registers to '0' to enable the interrupt function of corresponding port.

When one port is configured as input and the interrupt function is enabled, any changes of input data of the port will set the corresponding bit in P0INTST/P1INTST (address 14h/15h) to '1', and at the same time generate an interrupt event. Reading registers P0DI/P1DI by I<sup>2</sup>C interface will clear the value of registers P0INTST/P1INTST. The sequence diagram is shown as below:



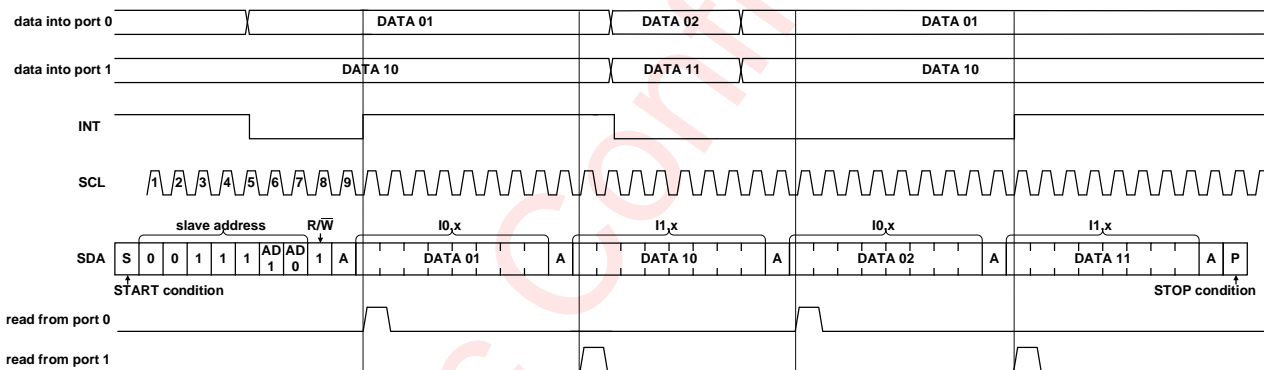
Interrupt function is enabled and non-latched

When interrupt function is enabled and a bit in registers P0LEN/P1LEN (address 0Ch/0Dh) is '0', the corresponding input pin state is not latched (as default). When the input data changes, an interrupt is generated. If the input data recovers, the interrupt is cleared. The sequence diagram is shown as below:



Interrupt function is enabled and non-latched

In contrast, when a bit in registers P0LEN/P1LEN is '1', the corresponding input pin state is latched. When the input data of port changes, an interrupt is generated. Even if the input data recovers, the interrupt is not cleared until P0DI/P1DI are read. During the interruption the value read from P0DI/P1DI reflects the value that caused the interrupt. After reading, the interrupt is cleared. If read again, P0DI/P1DI will reflect the current input data of the port. The sequence diagram is shown as below:



Interrupt function is enabled and latch enabled

**Note:** In addition, when the register address read by the host is 00 or 01, the address will only jump between 00 and 01.

## I<sup>2</sup>C INTERFACE

The AW95016A supports the I<sup>2</sup>C protocol. The maximum frequency supported by the I<sup>2</sup>C is 1MHz.

The pull-up resistor for the SDA and SCL can be selected from 1k to 10kΩ. Usually, 4.7kΩ is recommended for 400 kHz I<sup>2</sup>C, 1kΩ is recommended for 1MHz I<sup>2</sup>C. The voltage from 1.8V to 3.3V is allowed for the I<sup>2</sup>C interface. Additionally, the I<sup>2</sup>C chip supports continuous read and write operations. Particularly, if register address is 00h or 01h, the slave chip will poll register address between 00h and 01h.

### CHIP ADDRESS

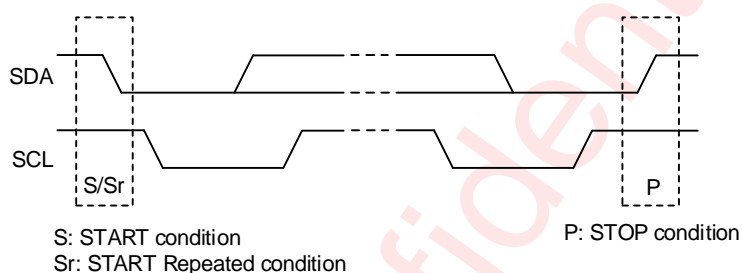
The I<sup>2</sup>C chip address is 7-bit (A7~A1), followed by the bit R/W (A0). Set A0 to "0" for writing and "1" for reading. The values of bit A1 and A2 are depended on the pin AD0. There are 2 options: V<sub>DD(P)</sub> and GND. The A7 to A3 is "01000" constantly. The chip also supports using a broadcast slave address of 1Ch. All slave addresses as followed.

AD PIN	A7:A3	A2:A1	A0	Chip Address	Broadcast Address
GND	01000	00	0/1	20h	1Ch
V <sub>DD(P)</sub>		01		21h	

### I<sup>2</sup>C START/STOP

All transactions begin with a START and are terminated by a STOP sent by master to slave. A high-to-low transition on the SDA input/output while the SCL input is high defines a START condition. A low-to-high transition on the SDA input/output while the SCL input is high defines a STOP condition.

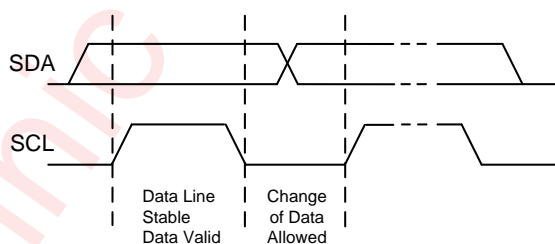
In particular, the bus stays busy when a repeated START (Sr) is generated instead of a STOP signal corresponding to the last START (S). Sr and S are usually regarded as equivalent.



### I<sup>2</sup>C START/STOP Condition Timing

### DATA VALIDATION

When SCL is high level, SDA level must be constant. SDA can be changed only when SCL is low level. Each SCL pulse corresponds to one bit data transaction.

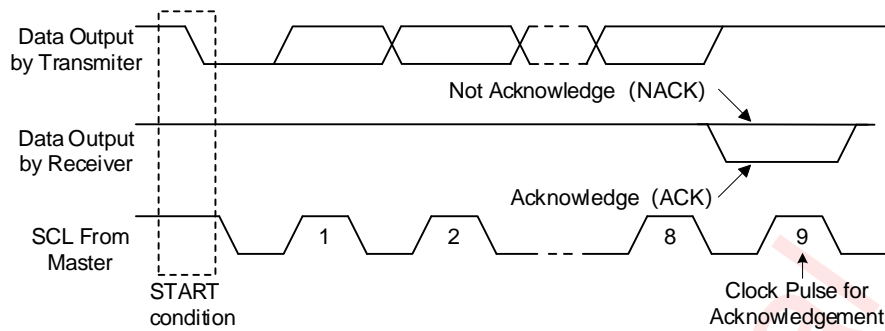


### Data Validation Diagram

### ACK (ACKNOWLEDGEMENT)

ACK means the successful transaction of I<sup>2</sup>C bus data. During writing cycle, after master sends 8-bit data, SDA must be released by master and SDA is pulled down to GND by slave chip when slave sends ACK.

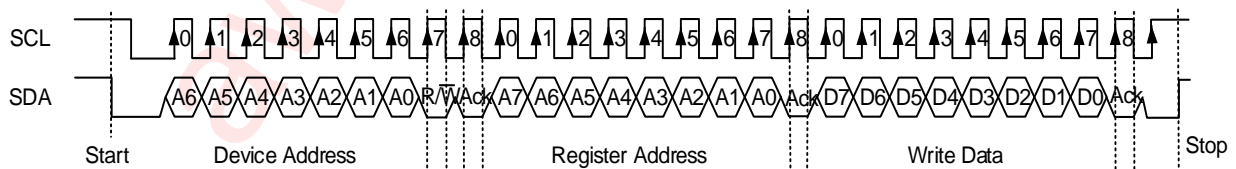
During reading cycle, after slave chip sends 8-bit data, slave releases the SDA and waits for ACK from master. If master sends ACK with STOP condition, slave chip sends the next data. If master sends NACK, slave chip stops sending data and waits for I<sup>2</sup>C stop.

I<sup>2</sup>C ACK Timing**WRITE CYCLE**

One data bit is transferred during each clock pulse. Data is sampled during the high state of the serial clock (SCL). Consequently, throughout the clock's high period, the data should remain stable. Any changes on the SDA line aborts the current transaction during the high state of the SCL. New data should be sent to SDA bus during the low SCL state. This protocol allows a single data line to transfer both command/control information and data using the synchronous serial clock.

Each data transaction is composed of a start condition, a number of byte transfers and a stop condition to terminate the transaction. Every byte written to the SDA bus must be 8 bits and is transferred with the most significant bit first. After each byte, an ACK signal must follow.

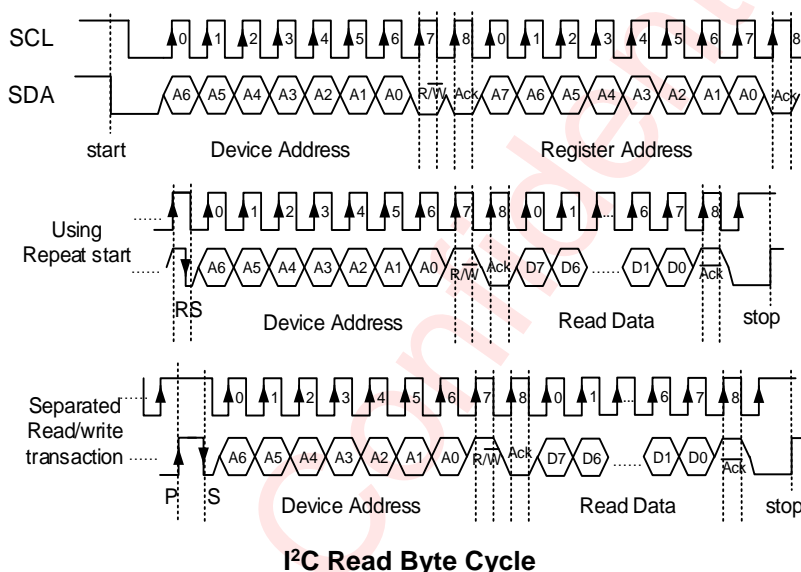
1. In a write process, the following steps should be followed:
2. Master chip generates START condition. The "START" signal is generated by pulling down the SDA signal while the SCL signal is high.
3. Master chip sends slave address (7-bit) and the data direction bit (R/W = 0).
4. Slave chip sends acknowledge signal if the slave address is correct.
5. Master sends control register address (8-bit).
6. Slave sends acknowledge signal.
7. Master sends data byte to write to the addressed register.
8. Slave sends acknowledge signal.
9. If master send more data bytes, the control register address will be incremented by one after acknowledge signal (repeat step f and g).
10. Master generates STOP condition to indicate write cycle ends.

I<sup>2</sup>C Write Byte Cycle**READ CYCLE**

In a read cycle, the following steps should be followed:

1. Master chip generates START condition
2. Master chip sends slave address (7-bit) and the data direction bit (R/W = 0).
3. Slave chip sends acknowledge signal if the slave address is correct.

4. Master sends control register address (8-bit)
5. Slave sends acknowledge signal
6. Master generates STOP condition followed with START condition or REPEAT START condition
7. Master chip sends slave address (7-bit) and the data direction bit (R/W = 1).
8. Slave chip sends acknowledge signal if the slave address is correct.
9. Slave sends data byte from addressed register.
10. If the master chip sends acknowledge signal, the slave chip will increase the control register address by one, then send the next data from the new addressed register. In particular, if register address is 00h or 01h, the slave chip will poll register address between 00h and 01h.
11. If the master chip generates STOP condition, the read cycle ends.



## REGISTER CONFIGURATION

### REGISTER LIST

ADDR	R/W	NAME	D7	D6	D5	D4	D3	D2	D1	D0	DEF
00h	R	P0DI	P0DI								00h
01h	R	P1DI	P1DI								00h
02h	RW	P0DO	P0DO								00h
03h	RW	P1DO	P1DO								00h
04h	RW	P0INVEN	P0INVEN								00h
05h	RW	P1INVEN	P1INVEN								00h
06h	RW	P0DIR	P0DIR								00h
07h	RW	P1DIR	P1DIR								00h
08h	RW	P0DSR1	P03DS	P02DS		P01DS		P00DS		00h	
09h	RW	P0DSR2	P07DS	P06DS		P05DS		P04DS		00h	
0Ah	RW	P1DSR1	P13DS	P12DS		P11DS		P10DS		00h	
0Bh	RW	P1DSR2	P17DS	P16DS		P15DS		P14DS		00h	
0Ch	RW	P0LEN	P0LEN								00h
0Dh	RW	P1LEN	P1LEN								00h

ADDR	R/W	NAME	D7	D6	D5	D4	D3	D2	D1	D0	DEF
0Eh	RW	P0PEN	P0PEN								00h
0Fh	RW	P1PEN	P1PEN								00h
10h	RW	P0PMD	P0PMD								00h
11h	RW	P1PMD	P1PMD								00h
12h	RW	P0MSK	P0MSK								FFh
13h	RW	P1MSK	P1MSK								FFh
14h	R	P0INTST	P0INTST								00h
15h	R	P1INTST	P1INTST								00h
16h	RW	P0DOMD	P0DOMD								00h
17h	RW	P1DOMD	P1DOMD								00h
1Ah	RW	GGCR	-							EGC	-
60h	R	STATE	-			PUST	-				00h
61h	RW	GCR2	-			BSDIS	-				00h
70h	RW	RESET	RESET/ID								80h

## REGISTER DETAILED DESCRIPTION

### P0DI/P1DI: Input State Register (Address 00h/01h)

Bit	Symbol	R/W	Description	Default
7:0	P0DI	R	P0 input state 0: low level 1: high level	00h
7:0	P1DI	R	P1 input state 0: low level 1: high level	00h

### P0DO/P1DO: Output State Register (Address 02h/03h)

Bit	Symbol	R/W	Description	Default
7:0	P0DO	RW	P0 output state 0: low level 1: high level	00h
7:0	P1DO	RW	P1 output state 0: low level 1: high level	00h

### P0INVEN/P1INVEN: Invert Enable Register (Address 04h/05h)

Bit	Symbol	R/W	Description	Default
7:0	P0INVEN	RW	P0 input state invert enable 0: disable 1: enable	00h
7:0	P1INVEN	RW	P1 input state invert enable 0: disable	00h

			1: enable	
--	--	--	-----------	--

**P0DIR/P1DIR: Direction Register (Address 06h/07h)**

Bit	Symbol	R/W	Description	Default
7:0	P0DIR	RW	P0 input/output direction 0: input 1: output	00h
7:0	P1DIR	RW	P1 input/output direction 0: input 1: output	00h

**P0DSR1/ P0DSR2/ P1DSR1/P1DSR2: Drive Strength Register (Address 08h~0Bh)**

Bit	Symbol	R/W	Description	Default
7:0	P0DSR1	RW	P0.0~P0.3 GPIO drive capability of the I/O 00: 0.25x 01: 0.5x 10: 0.75x 11: 1x	00h
7:0	P0DSR2	RW	P0.4~P0.7 GPIO drive capability of the I/O 00: 0.25x 01: 0.5x 10: 0.75x 11: 1x	00h
7:0	P1DSR1	RW	P1.0~P1.3 GPIO drive capability of the I/O 00: 0.25x 01: 0.5x 10: 0.75x 11: 1x	00h
7:0	P1DSR2	RW	P1.4~P1.7 GPIO drive capability of the I/O 00: 0.25x 01: 0.5x 10: 0.75x 11: 1x	00h

**P0LEN/P1LEN: Latch Enable Register (Address 0Ch/0Dh)**

Bit	Symbol	R/W	Description	Default
7:0	P0LEN	RW	P0 input state latch enable 0: disable 1: enable	00h
7:0	P1LEN	RW	P1 input state latch enable 0: disable	00h

			1: enable	
--	--	--	-----------	--

**P0PEN/P1PEN: Pull Up/Down Enable Register (Address 0Eh/0Fh)**

Bit	Symbol	R/W	Description	Default
7:0	P0PEN	RW	P0 pull up/down resistors enable 0: disable 1: enable	00h
7:0	P1PEN	RW	P1 pull up/down resistors enable 0: disable 1: enable	00h

**P0PMD/P1PMD: Pull Up/Down Mode Register (Address 10h/11h)**

Bit	Symbol	R/W	Description	Default
7:0	P0PMD	RW	P0 pull up/down mode 0: pull down 1: pull up	00h
7:0	P1PMD	RW	P1 pull up/down mode 0: pull down 1: pull up	00h

**P0MSK/P1MSK: Interrupt Mask Register (Address 12h/13h)**

Bit	Symbol	R/W	Description	Default
7:0	P0MSK	RW	P0 interrupt mask 0: disable 1: enable	FFh
7:0	P1MSK	RW	P1 interrupt mask 0: disable 1: enable	FFh

**P0INTST/P1INTST: Interrupt State Register (Address 14h/15h)**

Bit	Symbol	R/W	Description	Default
7:0	P0INTST	R	P0 interrupt state 0: no interrupt occurred 1: interrupt occurred	00h
7:0	P1INTST	R	P1 interrupt state 0: no interrupt occurred 1: interrupt occurred	00h

**P0DOMD/P1DOMD: Output Mode Register (Address 16h/17h)**

Bit	Symbol	R/W	Description	Default
7:0	P0DOMD	RW	P0 output mode	00h

			0: push pull 1: open drain	
7:0	P1DOMD	RW	P1 output mode 0: push pull 1: open drain	00h

**GGCR, 1AH :GPIO Global Control Register**

Bit	Symbol	R/W	Description	Default
7:2	reserved	-	-	000000
1:0	EGC	RW	GPIO output edge control 00: 0.5ns 01: 1ns 10: 4ns 11: 8ns	00

**STATE: UVLO Control Register (Address 60h)**

Bit	Symbol	R/W	Description	Default
7:5	reserved	-	-	000
4	PUST	R	Power up status 0: no power up occurred 1: Power up occurred	0
3:0	reserved	-	-	0000

**GCR2: Global Control Register2 (Address 61h)**

Bit	Symbol	R/W	Description	Default
7:5	reserved	-	-	000
4	BSDIS	RW	I <sup>2</sup> C broadcast slave address disable 0: I <sup>2</sup> C broadcast slave address enable 1: I <sup>2</sup> C broadcast slave address disable	0
3:0	reserved	-	-	0000

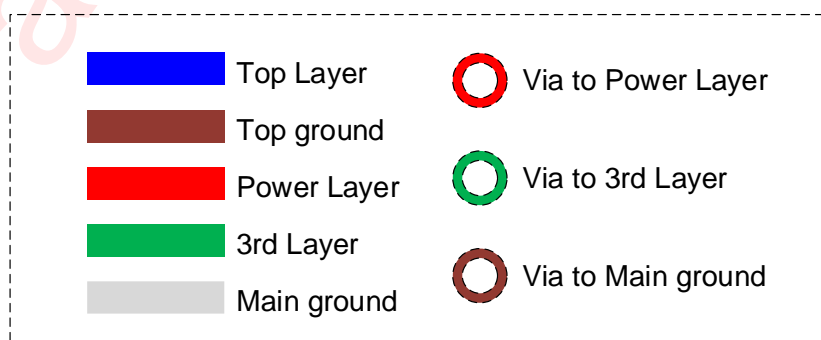
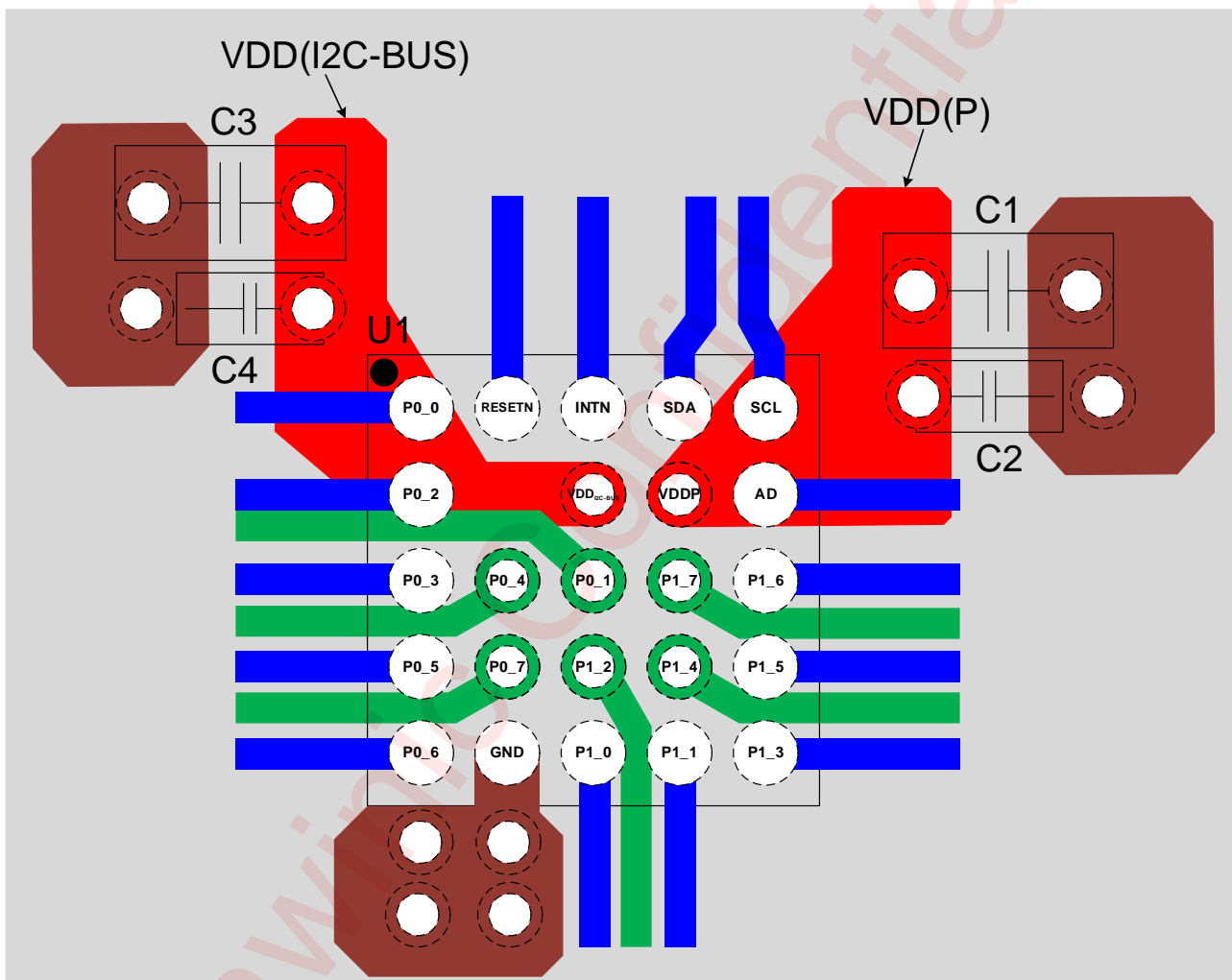
**RESET: Reset Register (Address 70h)**

Bit	Symbol	R/W	Description	Default
7:0	RESET	RW	Software reset/ID Write 00h will reset all registers to their default value. When read, chip ID is read out.	80h

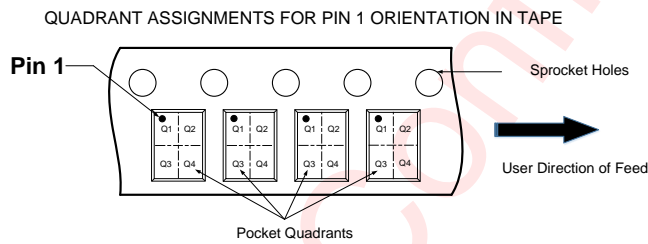
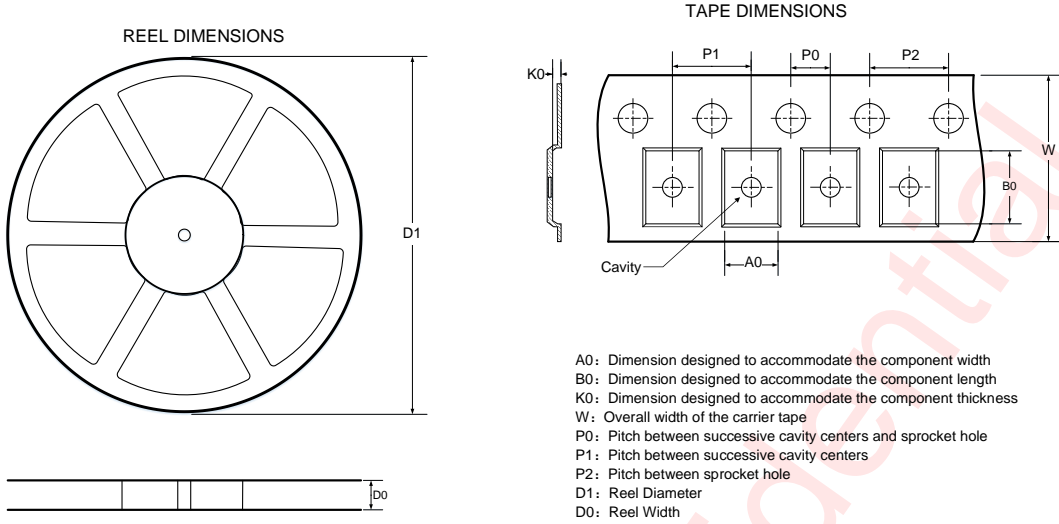
## PCB LAYOUT CONSIDERATION

AW95016A is a 16 channel general purpose I/O (GPIO) expander controller. Each channel can be configured as GPIO input or output separately. To obtain the good thermal performance and avoid thermal shutdown, PCB layout should be considered carefully. Here are some guidelines:

1. The C1、C2、C3、C4 should be placed as close to the chip as possible.
2. The GND pad must be well connected to the ground of the PCB, and add as many thermal vias as possible near the GND on the PCB for the heat conductivity of the device and PCB.



## TAPE AND REEL INFORMATION



Note: The above picture is for reference only. Please refer to the value in the table below for the actual size

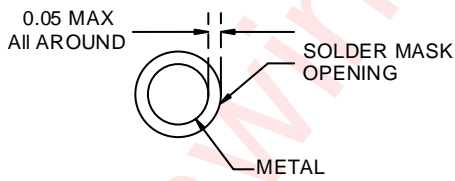
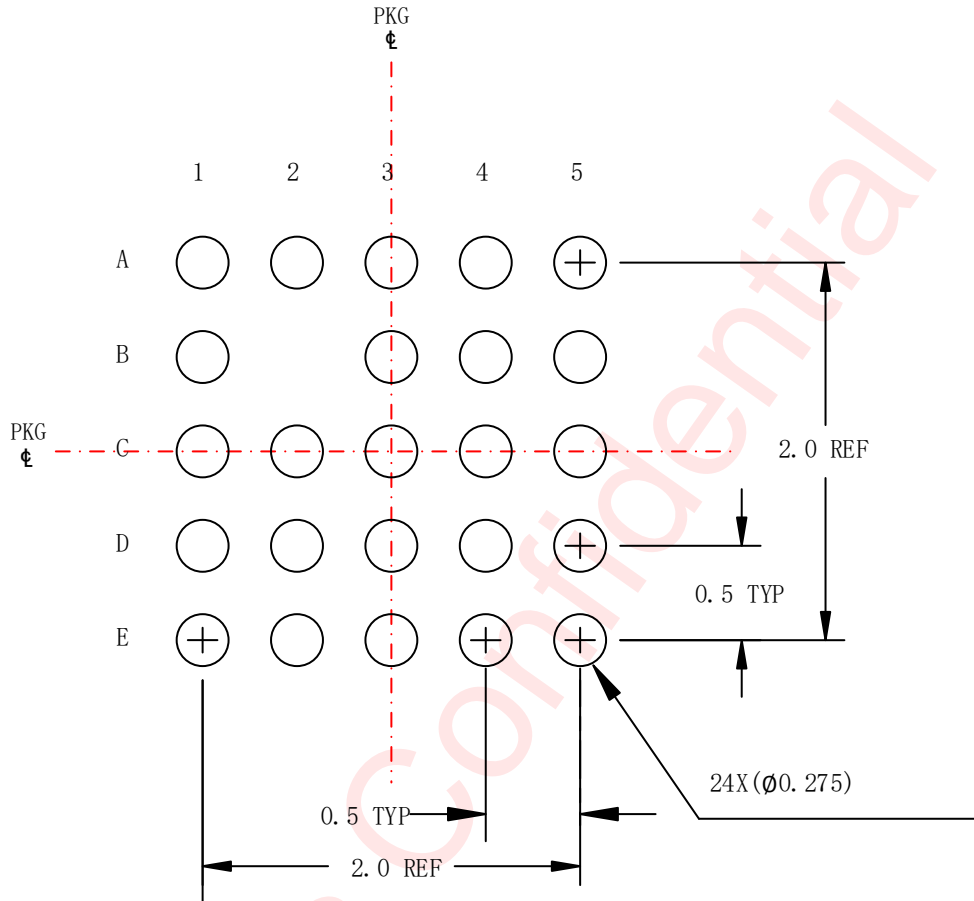
DIMENSIONS AND PIN1 ORIENTATION

D1 (mm)	D0 (mm)	A0 (mm)	B0 (mm)	K0 (mm)	P0 (mm)	P1 (mm)	P2 (mm)	W (mm)	Pin1 Quadrant
330	12.4	3.3	3.3	1.1	2	8	4	12	Q1

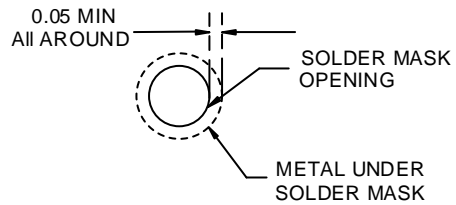
All dimensions are nominal



LAND PATTERN DATA



NON-SOLDER MASK DEFINED



SOLDER MASK DEFINED

Unit: mm

**REVISION HISTORY**

Version	Date	Change Record
V1.0	Sep. 2020	Officially released
V1.1	May.2022	Add lo <sub>H</sub> , lo <sub>L</sub> and I <sub>IL</sub> , Correct Default Vaule of Register 70h

awinic Confidential

## DISCLAIMER

All trademarks are the property of their respective owners. Information in this document is believed to be accurate and reliable. However, Shanghai AWINIC Technology Co., Ltd (AWINIC Technology) does not give any representations or warranties, expressed or implied, as to the accuracy or completeness of such information and shall have no liability for the consequences of use of such information.

AWINIC Technology reserves the right to make changes to information published in this document, including without limitation specifications and product descriptions, at any time and without notice. Customers shall obtain the latest relevant information before placing orders and shall verify that such information is current and complete. This document supersedes and replaces all information supplied prior to the publication hereof.

AWINIC Technology products are not designed, authorized or warranted to be suitable for use in medical, military, aircraft, space or life support equipment, nor in applications where failure or malfunction of an AWINIC Technology product can reasonably be expected to result in personal injury, death or severe property or environmental damage. AWINIC Technology accepts no liability for inclusion and/or use of AWINIC Technology products in such equipment or applications and therefore such inclusion and/or use is at the customer's own risk.

Applications that are described herein for any of these products are for illustrative purposes only. AWINIC Technology makes no representation or warranty that such applications will be suitable for the specified use without further testing or modification.

All products are sold subject to the general terms and conditions of commercial sale supplied at the time of order acknowledgement.

Nothing in this document may be interpreted or construed as an offer to sell products that is open for acceptance or the grant, conveyance or implication of any license under any copyrights, patents or other industrial or intellectual property rights.

Reproduction of AWINIC information in AWINIC data books or data sheets is permissible only if reproduction is without alteration and is accompanied by all associated warranties, conditions, limitations, and notices. AWINIC is not responsible or liable for such altered documentation. Information of third parties may be subject to additional restrictions.

Resale of AWINIC components or services with statements different from or beyond the parameters stated by AWINIC for that component or service voids all express and any implied warranties for the associated AWINIC component or service and is an unfair and deceptive business practice. AWINIC is not responsible or liable for any such statements.